



EXPLORE YOUR SHORE
March 15th, 2025

Grattan Beach, Salthill



Galway
Atlantaquaria®

How did we get on in March?

Our March Explore Your Shore (15th March) was quite exciting, we learned about adhesives and also discovered a beautiful community of Sea Hares (*Aplysia punctata*). The last record of this species on Grattan was in May 2021, so it was a pleasure to officially record it on the National Biodiversity Database.

Last week Sibéal had found a Glass eel, and it was this discovery that encouraged us to head out. Unfortunately we did not record a Glass eel this time.

There is a dodgy area on Grattan Beach, I call it 'Leg Breaker Ridge', and it is the BEST area for sponges so we explored and found some fantastic Breadcrumb Sponges. This area would only be for experienced Rockpoolers, so we would not recommend it at all. We only explored this area to record the Sponges for a particular Citizen Science project.

Otherwise we found a lovely Juvenile Brown Crab, and 25 other species, a good days outing and we look forward to the next Explore Your Shore.

It's not what you look at that matters, it's what you see.
Henry David Thoreau



About Galway Atlantaquaria, and Explore Your Shore

Galway Atlantaquaria, is Ireland's largest native species Aquarium in the heart of Sathill, Galway City.

Our goal is to engage, educate, and inspire people to protect our most vulnerable biodiversity and ecosystems.

The reason we support Explore Your Shore is to try and record every species that lives in Grattan Beach, so we can track these populations, identify vulnerable species, share high-quality images, share knowledge (and learn from our rockpool community), encourage others to champion Explore Your Shore, and finally have fun.

Exploring The Shore is a huge part of Citizen Science.

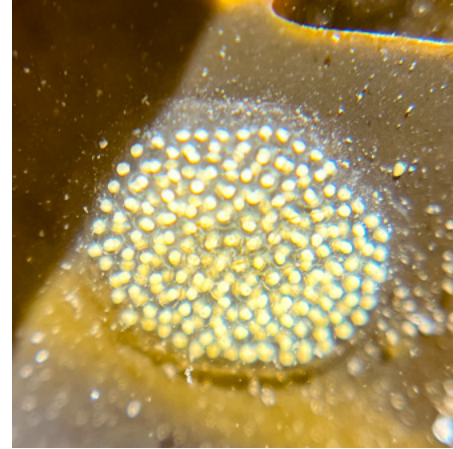




Dendrodoa grossularia - Baked Bean Ascidian



Eulalia viridis - Green leaf worm (eggcase)



Littorina littorea - Periwinkle egg cases



Littorina littorea - Periwinkle egg cases



Halichondria panicea - Breadcrumb Sponge



Halichondria panicea - Breadcrumb Sponge



Cancer pagurus - Brown Crab



Jaera albifrons or *Sphaeroma serratum* - Pillbug



Ophiura ophiura - Brittlestar



Bryozoans



Littorina obtusata - Flat Periwinkle



Pomatoceros triquetter - Keelworm



Ascidia conchilega- Sea Squirt



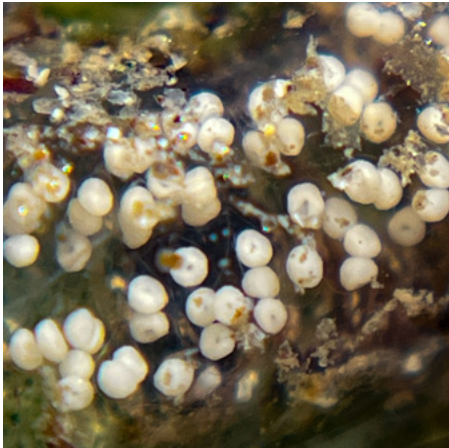
Calliostoma zizyphinum- Painted Top Shell



Chlamys varia - Variegated scallop



Aplysia punctata - Sea Hare



Calliostoma zizyphinum- Painted Top Shell (eggs)



Porcellana platycheles - Porcelain Crab (Broad)



Spirorbis (Spirorbis) spirorbis
- Sinistral spiral tubeworm



Nucella lapillus - Dogwhelk (with eggs)



Hediste diversicolor - Ragworm



Lanice conchilega- Sand Mason Worm

We have more video of the Rockpools, and Species on our YouTube Channel, see: [/GalwayAquarium](https://www.youtube.com/channel/UCGalwayAquarium)

MUST WATCH -Sea hare Video, see:
<https://www.youtube.com/watch?v=OzKHFFfx7s>



www.nationalaquarium.ie